

Australia

Table of available indicators: 2011 [2009]

Indicator	Youth (15-24)			Adult (25+)			Total
	Female	Male	Both	Female	Male	Both	
Working population (1000s)	1,540.43	1,609.52	3,149.94	7,817.44	1,607.37	15,310.48	18,460.42
Vulnerable employment (%)							
Unemployment Rate (%)	10.60	10.60	10.60	3.77	13.90	3.71	4.90
Unemployed (1000s)	107.46	113.20	220.66	168.57	157.45	369.09	589.76
Underemployment (%)	20.11	13.24	16.59				7.64
Net secondary enrolment ratio(%) '09	86	84	85				
Net primary enrolment ratio(%) '09							97
Labour Force Participation Rate (%)	66.10	66.60	66.30	57.27	70.20	64.91	65.20
Labour Force (1000s)	1,018.44	1,071.46	2,089.90	4,476.90	1,128.98	9,938.14	12,028.04
Inactivity Rate (%)	33.90	33.40	33.70	42.73	29.80	35.09	34.80
Employment-to-population ratio (%)	59.10	59.50	59.30	55.11	60.40	62.50	62.00

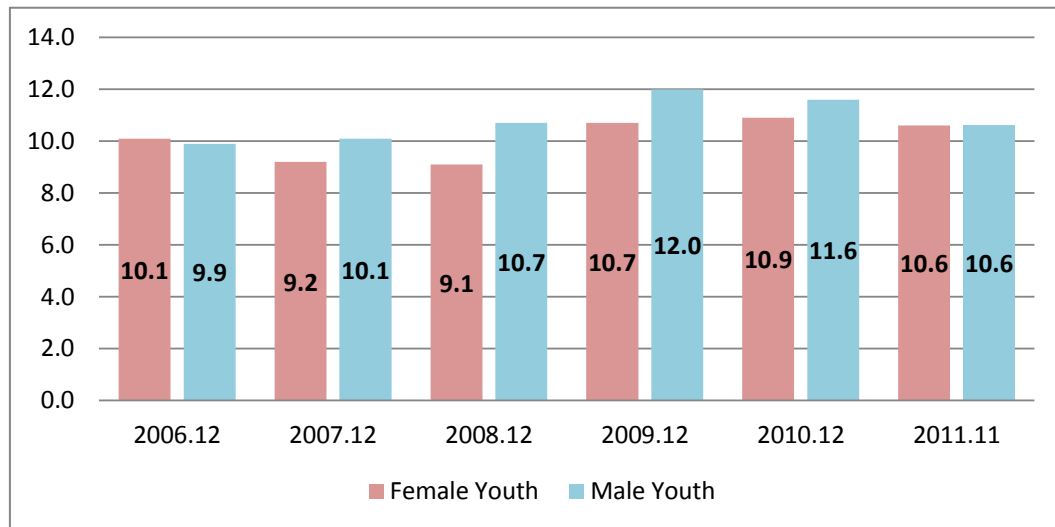
APYouthNet 1.0



Get Involved!

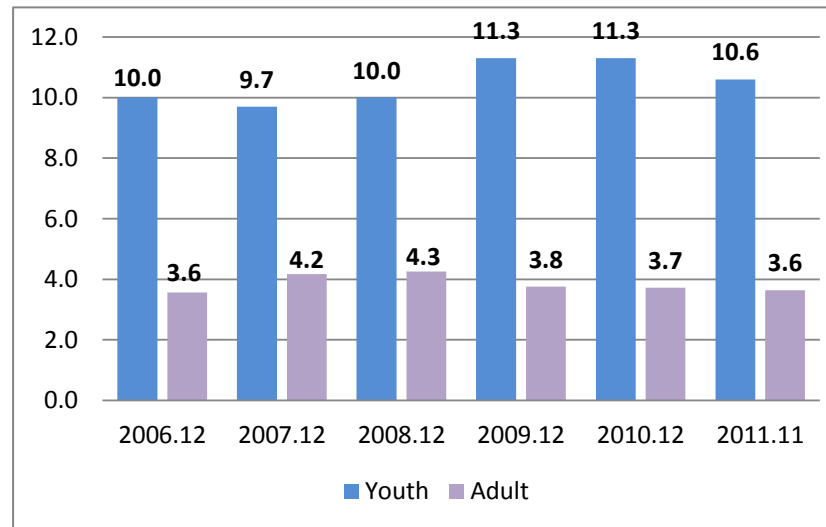
<http://www.apyouthnet.ilo.org/>

Youth unemployment rates (%)



Sources: Australian Bureau of Statistics_Labour Force Survey_2006-2011

Youth to adult unemployment rates (%)

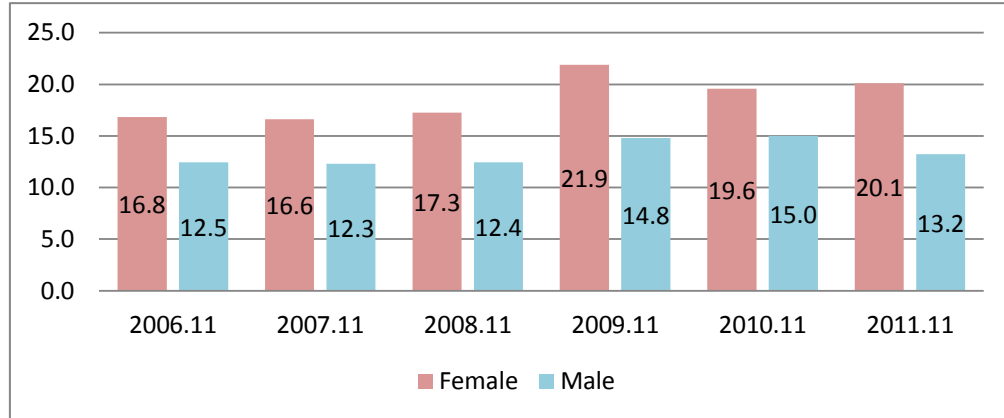


Sources: Australian Bureau of Statistics_Labour Force Survey_2006-2011

International Labour Office_KILM_2012

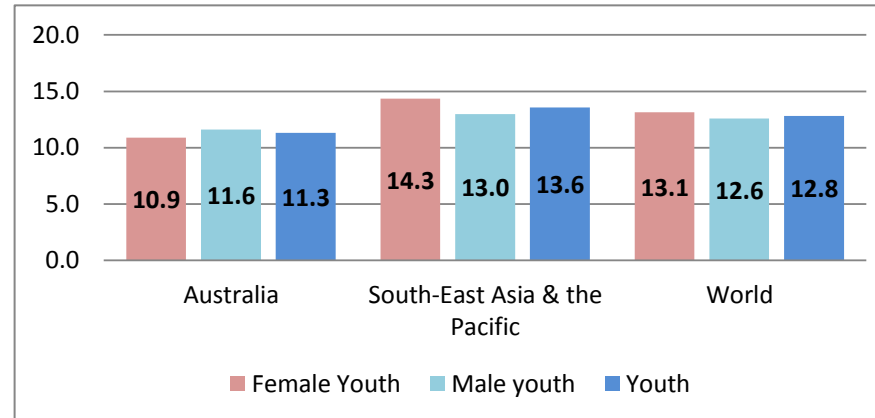
Australia

Youth underemployment (% of employed)



Sources: Australian Bureau of Statistics_Monthly Labour Force Survey_2006-2011

Youth unemployment rate comparisons: 2010

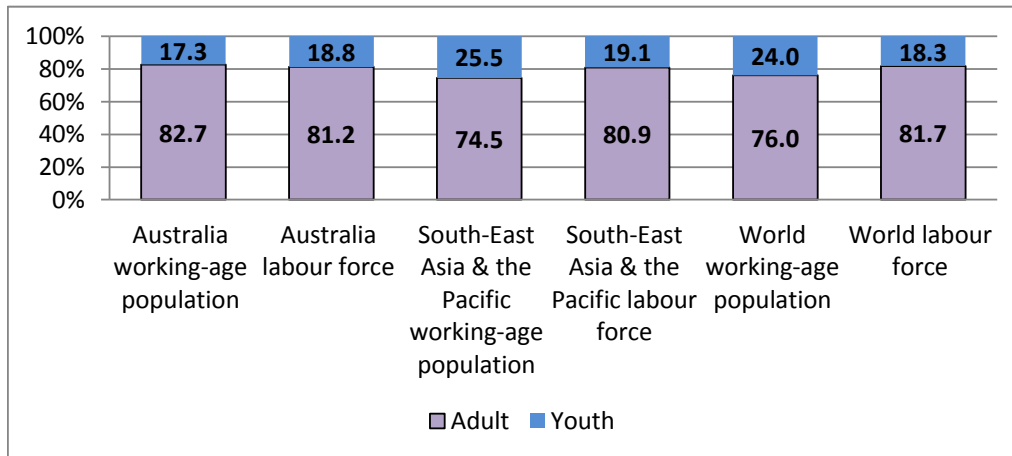


Sources: International Labour Office_Trends Estimation Model (TRENDS)_2012

International Labour Office_KILM_2012 and

Australian Bureau of Statistics_Monthly Labour Force Survey_2006-2011

Youth share in total working-age population: 2010

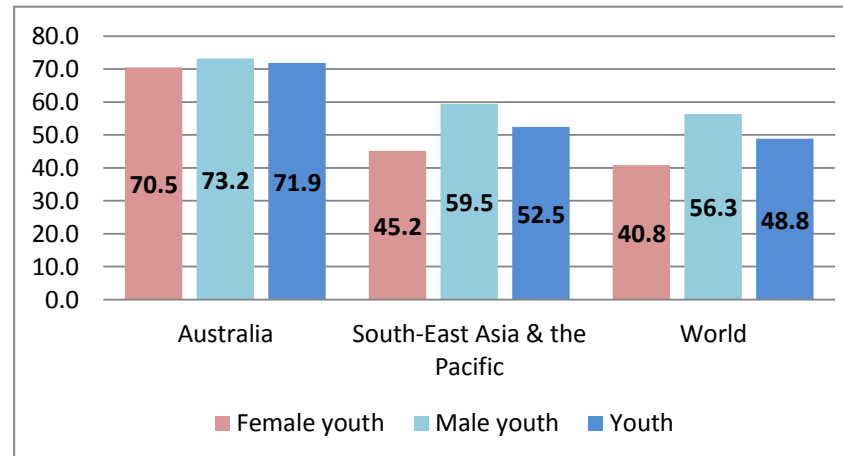


Sources: International Labour Office_Trends Estimation Model (TRENDS)_2012 and

International Labour Office_KILM_2012 and

Australian Bureau of Statistics_Monthly Labour Force Survey_2006-2011

Labour force participation rate: 2010



Sources: International Labour Office_Trends Estimation Model (TRENDS)_2012

International Labour Office_KILM_2012 and

Australian Bureau of Statistics_Monthly Labour Force Survey_2006-2011

Australia

Table of Available Indicators

Source:

Reference Date:

Working population (1000s)	Australian Bureau of Statistics_Monthly Labour Force Survey_2006-2011	2011.11
Vulnerable employment (%)		
Unemployment Rate (%)	Australian Bureau of Statistics_Monthly Labour Force Survey_2006-2011	2011.11
Unemployed (1000s)	Australian Bureau of Statistics_Monthly Labour Force Survey_2006-2011	2011.11
Underemployment (%)	Australian Bureau of Statistics_Monthly Labour Force Survey_2006-2011	2011.11
Net secondary enrolment ratio (%)	UNESCO_Institute of Statistics 20/20 WDS Online_2012	2009
Net primary enrolment ratio (%)	UNESCO_Institute of Statistics 20/20 WDS Online_2012	2009
Labour Force Participation Rate (%)	Australian Bureau of Statistics_Monthly Labour Force Survey_2006-2011	2011.11
Labour Force (1000s)	Australian Bureau of Statistics_Monthly Labour Force Survey_2006-2011	2011.11
Inactivity Rate (%)	Australian Bureau of Statistics_Monthly Labour Force Survey_2006-2011	2011.11
Employment-to-population ratio (%)	Australian Bureau of Statistics_Monthly Labour Force Survey_2006-2011	2011.11

Notes

Future versions will have adult underemployment calculations.